



# Reimagining Work

with Think Productive

YOUR PEOPLE WILL SHINE. ✨  
YOUR ORGANIZATION WILL THRIVE.



## THE UNIVERSAL PROBLEM

CONSTANT DEMANDS, FRAGMENTED ATTENTION,

PRESSURES ON WELLBEING.

INFORMATION OVERLOAD, ENDLESS MEETINGS,

EMAILS AND INTERRUPTIONS.

ALL OF THIS SET AGAINST A RAPIDLY CHANGING

DIGITAL WORLD.

### WHAT CAN YOU DO ABOUT IT?

Equip your teams with the skills to navigate and to reimagine the changing work landscape.

Long-term overwhelm, burn-out, and disengagement are not sustainable. If your people do not feel valued or inspired to grow, many will vote with their feet, putting even more pressure on the team.

Making space for learning brings back the creativity, the innovation, the opportunity and the motivation to shine.

It shows your people that you see a bright future together.

### WE CAN HELP

By investing in the human skills needed to thrive and lead in any scenario, your people and your organization will develop an **indisputable competitive edge** and **consistent employee engagement**.

There are many training partners out there who can help you do this.

But if you're looking for a learning partner who will equip your people with the **tools, strategies** and **confidence** to transform work for the better, and who will do it with genuine **passion** you've come to the right place.

LET'S REIMAGINE WORK TOGETHER

think  
productive

# You're in safe hands

## WHY TRUST THINK PRODUCTIVE WITH THIS IMPORTANT WORK?

▶ **WE HAVE AN ESTABLISHED TRACK RECORD.**

We've been transforming work since 2009 and we're on a mission to change the world of work.

▶ **WE'RE THE HOME OF THE PRODUCTIVITY NINJA®.**

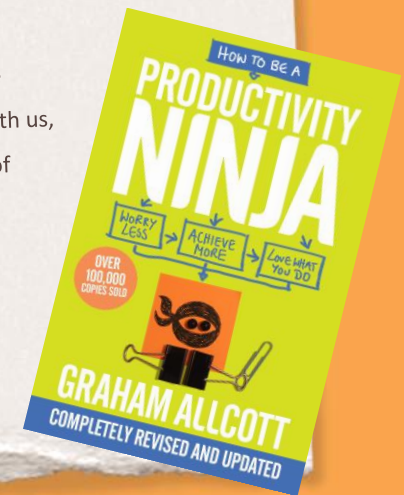
Founded by Graham Allcott, best-selling author, our team of experts have written books on everything from productivity and meetings to workplace nutrition, resilience and kindness in leadership.

▶ **CREATING PARTNERSHIPS.**

We're proud to say, we work with many clients year after year, partnering in their growth journey for their people and their leadership teams.

▶ **GLOBAL.** We understand work and cultures around the world because we have experts on the ground, upskilling your people and diverse multi-lingual teams, wherever they happen to be based.

▶ **INNOVATIVE.** Our head office has practiced a 4-day week since 2011. We lead with trust & kindness. We remind our people that they're "human, not superhero". When you work with us, you'll be rubbing shoulders with the future of work!



# OUR WORKSHOPS (Page 1 of 3)

## DID YOU KNOW?

Many of our longer sessions can be condensed to bite-sized Keynotes for larger groups!



PRODUCTIVITY & WELLBEING		LENGTH	GROUP SIZE
 <b>The Way of the Productivity Ninja</b>	Be inspired, form good habits, transform the way you work.	90 mins	Unlimited
 <b>How to be a Productivity Ninja</b>	Avoid distraction, get your best work done and make space for what matters.	6 hours	Up to 15
 <b>Microsoft for Productivity Ninjas</b>	Supercharge your productivity across a range of Microsoft applications.	6 hours	Up to 15
 <b>Getting Your Inbox to Zero</b>	Get email overload under control to gain clarity, focus and produce your best work.	3 hours	Up to 15
 <b>Fixing Meetings</b>	Making meetings rare, fun and productive again.	3 hours	Up to 20
 <b>Project Management 101</b>	Be the Project Manager who wows the rest.	6 hours	Up to 15
 <b>6 Weeks to Ninja Program</b>	The 6-Week program for lasting clarity, control and ninja habits.	2 hours per week for 6 weeks	Min 15

Please [contact us](#) and we'll share the pricing with you

Click images for more info...

All sessions deliverable online or face-to-face!

**think**  
**productive**

# OUR WORKSHOPS (Page 2 of 3)

## DID YOU KNOW?

Many of our longer sessions can be condensed to bite-sized Keynotes for larger groups!



### HYBRID & REMOTE WORKING

LENGTH

GROUP SIZE



#### Productivity Ninja Guide to Hybrid Working

Making Great Work Happen, Wherever We Are.

90 mins

Unlimited



#### Leading Hybrid Teams

Manage outcomes. Give control. Build trust.

2 hours

Up to 20

### LEADERSHIP



#### Supercharge Your Team Comms

Powerful team communication and collaboration without overwhelm.

3 hours

Up to 20



#### Delegate like a Productivity Ninja®

Empower your team. Reclaim your time.

3 hours

Up to 20



#### Influencing & Persuading

Uncovering the psychology to transform your influencing skills.

4 hours

Up to 15



#### Coaching to Empower

Discover the power of coaching to engage and develop your team.

3 hours

Up to 20



#### We Need to Talk

Replacing fear with clarity when giving and receiving feedback.

2 hours

Up to 20



#### Unlocking Emotional Intelligence

Manage emotions. Unleash high performance.

2 hours

Up to 20

Please [contact us](#) and we'll share the pricing with you

Click images for more info...

All sessions deliverable online or face-to-face!





think  
productive

# OUR WORKSHOPS (Page 3 of 3)

## DID YOU KNOW?

Many of our longer sessions can be condensed to bite-sized Keynotes for larger groups!



			LENGTH	GROUP SIZE
	<b>Love Your Inner Presenter</b>	Learn to enjoy presenting as you.	6 hours	Up to 8
<b>TEAM SPIRIT</b>				
	<b>Thriving Teams in Tricky Times</b>	Cultivating resilience & psychological safety.	3 hours	Up to 20
	<b>Cracking the Engagement Puzzle</b>	Uncovering the formula for the wellbeing & engagement of your people.	3 hours	Up to 20
<b>WELLBEING</b>				
	<b>Productivity Ninja Guide to Human Not Superhero</b>	Redefining how we do our best human work	2 hours	Unlimited

Please [contact us](#) and we'll share the pricing with you

 Click images for more info...

All sessions deliverable online or face-to-face!

# Creating impact

## OUR WORKSHOPS ARE:

### HIGHLY PRACTICAL:

- Fun, lively, interactive & thought-provoking
- Immediate impact, with practical actions on the day
- Blended learning approach to make the new habits stick

### BEHAVIOURAL:

- We understand psychology – not just technology – is critical for creating new sticky habits
- Our methodology encourages self-awareness
- Generating real appetite & excitement for mindset change

### LED BY EXPERTS:

- Inspirational & memorable subject-matter experts
- Providing human, tactical, real-life approaches
- Acknowledging the realities & challenges of working in today's world

**WE BRING THE WOW  
FACTOR TO YOUR  
EVENTS & LEARNING  
PROGRAMMES!**



**SINCE 2009, WE'VE  
HELPED OVER**

**350,000**

**PEOPLE ACROSS THE WORLD,  
IN MULTIPLE LANGUAGES  
(SPANNING EVERY INDUSTRY  
IMAGINABLE), TO DO THEIR  
BEST WORK.**

# Don't just take our word for it

My whole team loved it. Been thinking about nothing else for the last 48 hours! Amazing.  
GLOBAL HEAD OF MARKETING, HSBC

A liberating and productive workshop! A must-have for any workForce.  
MARKETING DIRECTOR, NBC UNIVERSAL

Simple, practical methods, powerful tools which can be used the next day.  
HEAD OF EDUCATION BIOCEUTICALS

It was well-thought-out, practical and the best use of my time in a training session in years.  
SENIOR MANAGER, EBAY

THE BEST WORKSHOP I'VE EVER BEEN TO!  
PHARMA MEDICAL SAFETY DIRECTOR, GSK

"It was 5 years ago when I attended your workshop. Still going strong with my second brain. Inbox still at zero."  
HEAD OF TRADING, SKY

I have never seen so many employees so enthused about implementing ideas and discovering new concepts proposed in a workshop before.  
ORGANISATIONAL DEVELOPMENT BP STOCKPORT HOMES

Just some of our clients ...



**99%\***

OF OUR CLIENTS  
RECOMMEND OUR WORKSHOPS

\*Think Productive Australia 2024 Customer Feedback Survey



# We stand for **INCLUSIVITY**

## OUR WORKSHOPS FOLLOW THE PRINCIPLES OF UNIVERSAL LEARNING. THIS MEANS:

- ✓ Giving all participants an equal opportunity to succeed.
- ✓ Offering flexibility in the way participants access material and show what they know.
- ✓ Seeking different ways to keep learners motivated and engaged.

### CREATING A SAFE LEARNING ENVIRONMENT

We understand that everyone learns differently, therefore:

- ▶ We don't assume we know participants' situations or context. We approach every interaction with natural curiosity and an open mind.
- ▶ We will never expect participants to contribute in a way that makes them feel uncomfortable. We welcome volunteers who would like to contribute to the discussion, but never insist.
- ▶ We prioritize the psychological safety of our participants, holding neutral, non-judgmental positions and language so they feel it's a safe place to learn, question and grow.

## CREATING AN ACCESSIBLE AND ENGAGING LEARNING EXPERIENCE

### IN-PERSON WORKSHOPS

- ▶ Many of our workshops include printed resources. If participants would like to view them in advance or need them to be printed in larger font/different paper, we can organize these modifications.

### ONLINE WORKSHOPS (LIVE WEBINARS)

- ▶ Participants have the freedom & option to enable closed captions when we deliver on Zoom.
- ▶ The digital pdf workbooks we provide are fillable online, as well as easily printable from a home printer if preferred.

### BE OUR GUEST

We want all our participants to feel comfortable and we're committed to making the learning experience accessible and successful for everyone. If you have any additional support needs, we're always happy to explore accommodating these with you or the Workshop Booker.

# IMPROVE EMPLOYEE ENGAGEMENT

Employee engagement consistently impacts company performance, no matter the industry, location or size of company.

The numbers speak for themselves.

Investing in a great workplace, where your people are doing their best work, where they are fully engaged and contributing to the success of the company, will drive better results for your organisation's productivity and its bottom line.

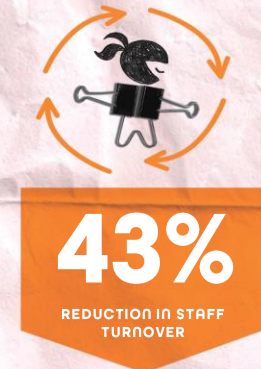
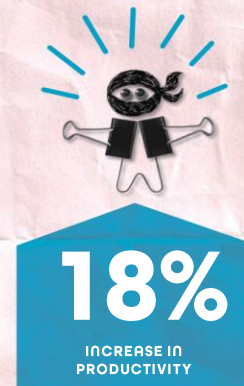
We get that pressure on budgets and the stress of just keeping up with the day-to-day chaos, can make it easy to put learning and culture-building on the side-lines.

But no one should put professional growth, workplace wellbeing or culture in the corner.

Investing in your people shows them you value them and their potential. Making space for learning is a win-win.

Your people will shine, your organization will thrive.

\*Gallup's 2020 Q12 Meta-Analysis of 2.7 million employees showed that companies with highly engaged employees experience:



# Results: The bigger picture



## THE PEOPLE CASE

### Reclaimed brilliance from improved:

- Clarity & control
- Focus
- Ability to deflect distraction
- Space for deep work
- Openness to opportunity & innovation
- Empowered to think strategically
- Management skills

### Wellbeing boost from:

- Less stress & overwhelm
- A team culture of trust
- More sustainable work/life balance
- Improved motivation, energy & optimism
- Growth in confidence & purpose



## THE BUSINESS CASE

### Reduced staff turnover

- ✓ Improved employee engagement
- ✓ Better employee retention
- ✓ More likely to recommend workplace

### Business productivity improvements

- ✓ Less reactivity & distraction
- ✓ Increased agility
- ✓ Less work-related stress & sick leave
- ✓ High performing teams

### Creativity and growth

- ✓ Increased innovation & impact-thinking
- ✓ Alignment to strategic vision
- ✓ Better decision-making
- ✓ Higher customer satisfaction

# Let's Create Change Together

## ALL OF OUR WORKSHOP

### PARTICIPANTS GET...

- ▶ **WORKSHOP BOOSTER PACK** with all the slides and key concepts covered in the workshop.
- ▶ **PRODUCTIVITY NINJA ACADEMY ACCESS** containing loads of additional resources and a free ecopy of the **How to be a Productivity Ninja** book!
- ▶ **REMINDERS & ADDITIONAL RESOURCES** with tips and techniques in our monthly newsletter and on our socials.



**Our Mission: creating a world where work is full of purpose, clarity and focus (and where everyone loves Mondays)**



**Let's chat ...**

**[www.thinkproductive.com.au](http://www.thinkproductive.com.au)**

**[hello@thinkproductive.com.au](mailto:hello@thinkproductive.com.au)**

**02 9981 1113**